


DaMBI 

Danish Molecular Biomedical Imaging Center
University of Southern Denmark

Danish Molecular Biomedical Imaging Center (DaMBIC)

- A multi-disciplinary state-of-the-art, open access, bioimaging research center that offers (bio)imaging expertise, state-of-the-art instrumentation well as image analyses solutions to our users.
- Our techniques cover the size range from from single molecules to rodents.

Danish Molecular Biomedical Imaging Center (DaMBIC)

People

- Headed by associate Professor Jonathan R. Brewer
- Anup Shrestha will be joining DaMBIC from January 2023 😊 Welcome Anup!
- Morten Frenndø Ebbesen is DaMBIC center manager and academic employee in the Brewer group.
- There is significant overlap between DaMBIC and the Brewer group. We help each other.



Jonathan R. Brewer
brewer@memphys.sdu.dk



Anup Shrestha



Morten F. Ebbesen
mfe@bmb.sdu.dk

Danish Molecular Biomedical Imaging Center (DaMBIC)

Location

- Odense, Denmark
- University of Southern Denmark (SDU)
- Department of Biochemistry and Molecular Biology

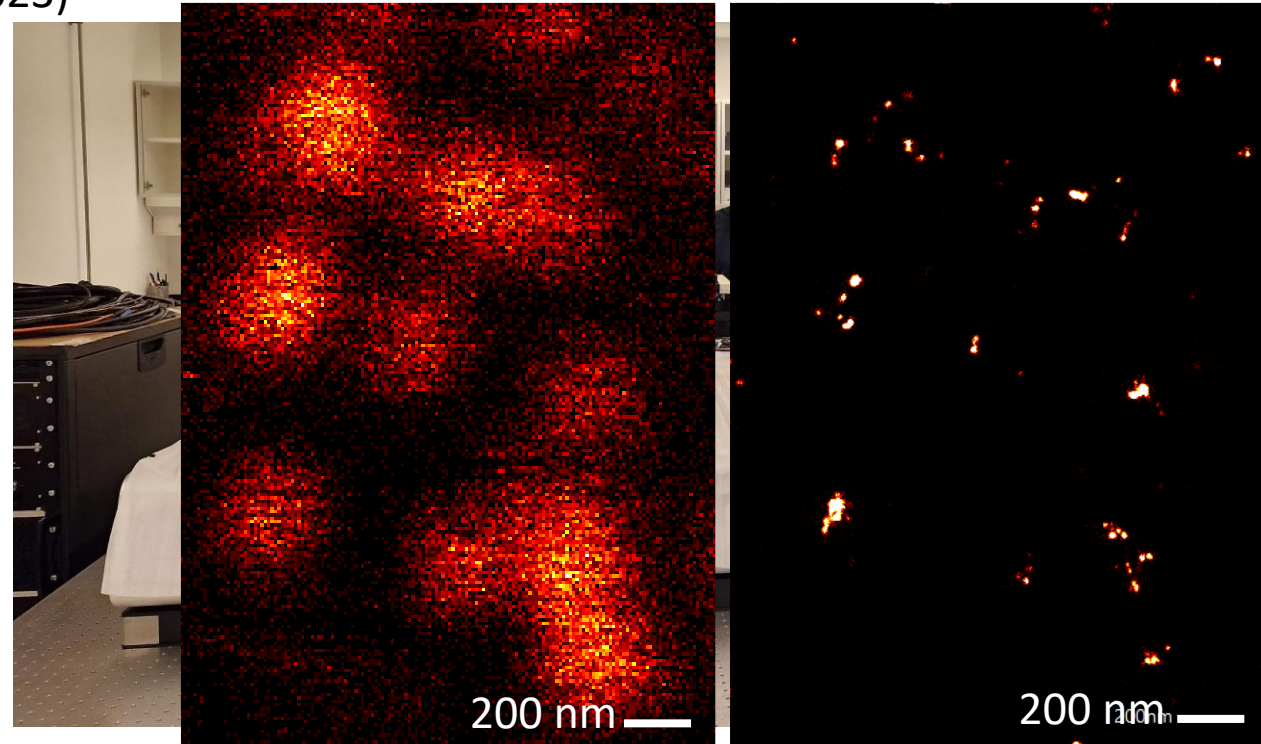


Danish Molecular Biomedical Imaging Center (DaMBIC)

Focus areas / strengths

Super resolution

- Abberior 3D MINIFLUX (recently installed, Nov 2022)
- Abberor 3D STED (775 nm STED laser)
- Leica STED (592 nm STED laser)
- 3D STORM/3D SIM
- Nikon Ti2-E CREST V3 DeepSIM (early 2023)

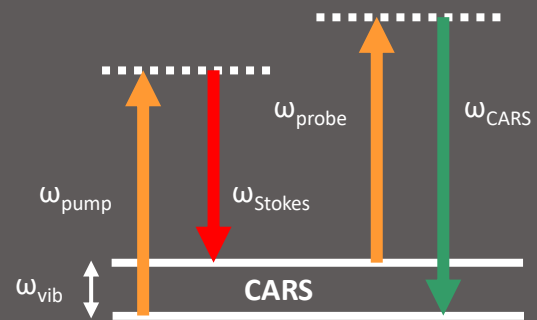


Danish Molecular Biomedical Imaging Center (DaMBIC)

Focus areas / strengths

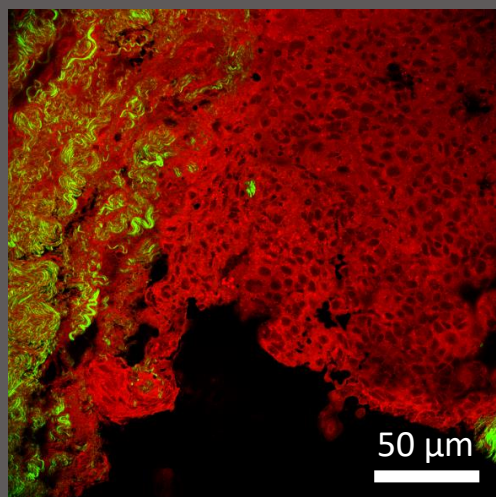
- Flexible custom build solutions
- Multi-photon imaging
 - New inverted multiphoton microscope (purchasing ongoing)
 - Custom-build Nikon 2P/FLIM
 - Coherent anti-Stokes Raman spectroscopy (CARS) microscopy

Coherent anti-Stokes Raman Scattering (CARS)



Application examples:

- Label-free imaging w. penetration depths to nearly 0.4 mm and reduced photodamage
- Lipid imaging
- Diffusion of water and drugs



CARS of skin

