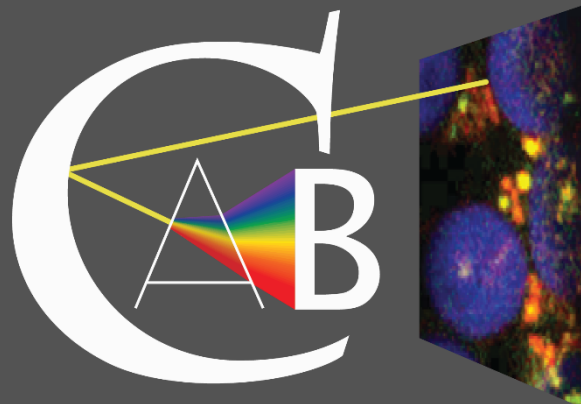




DBI-INFRA 2022



Center for Advanced Bioimaging Denmark

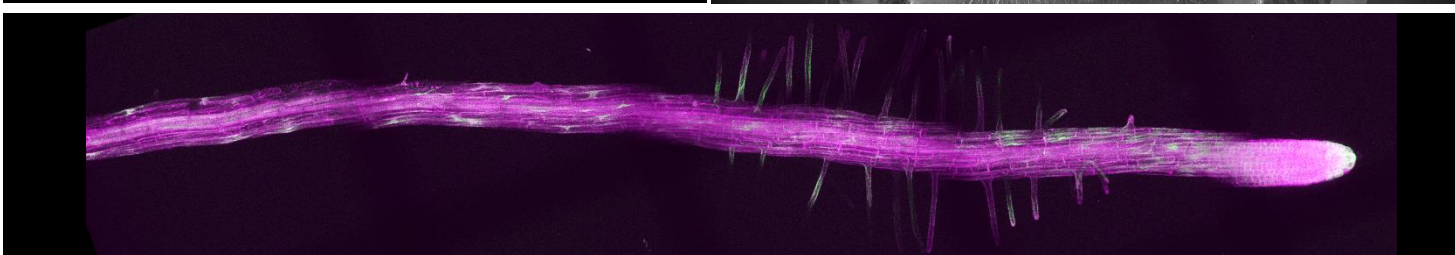
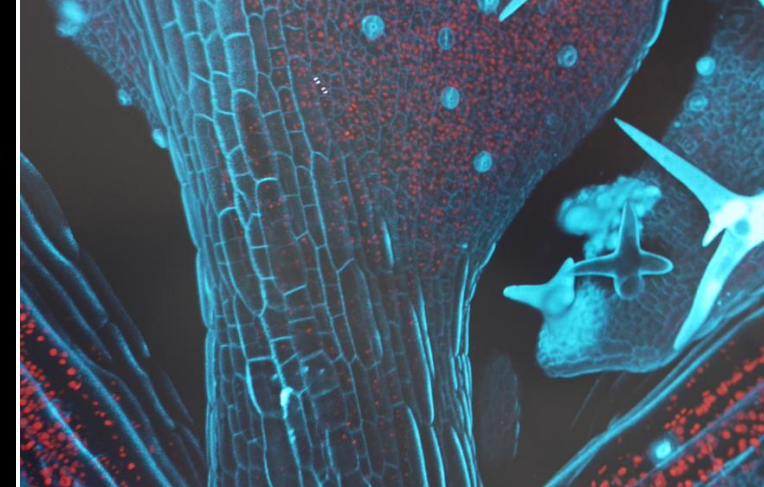
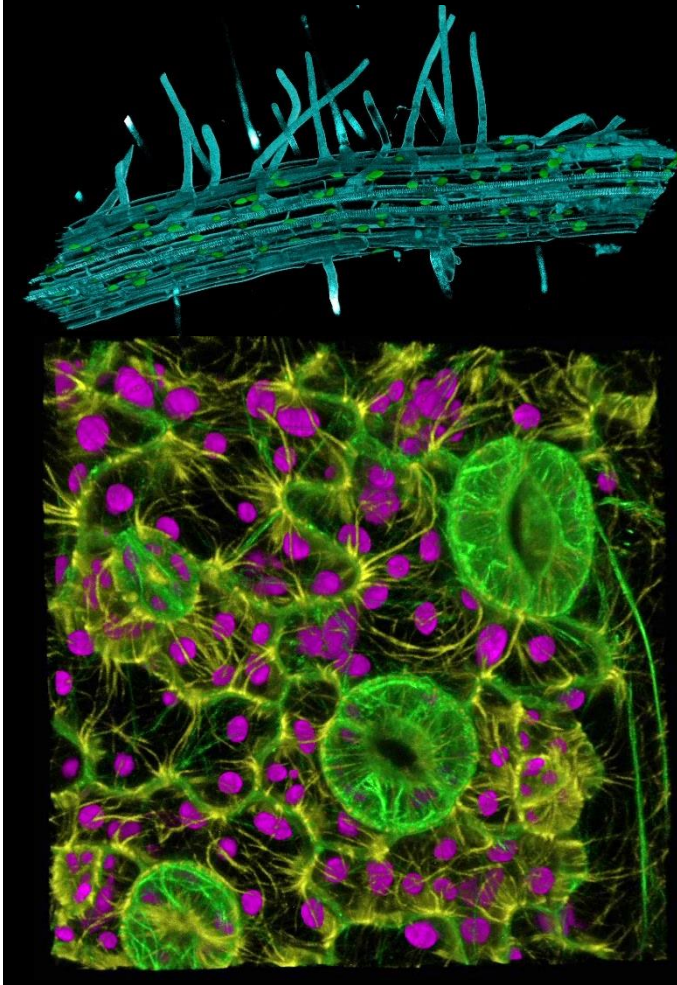
Center for Advanced Bioimaging

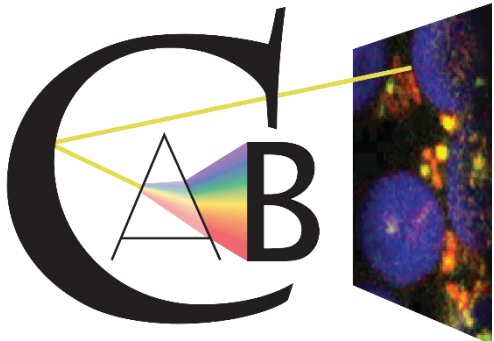
Sebastian Kjeldgaard-Nintemann

Center Manager, CAB Frederiksberg Campus, Dep. of Plant and Environmental Sciences

Nynne Meyn Christensen

Center Manager, CAB North Campus, Dep. of Biology



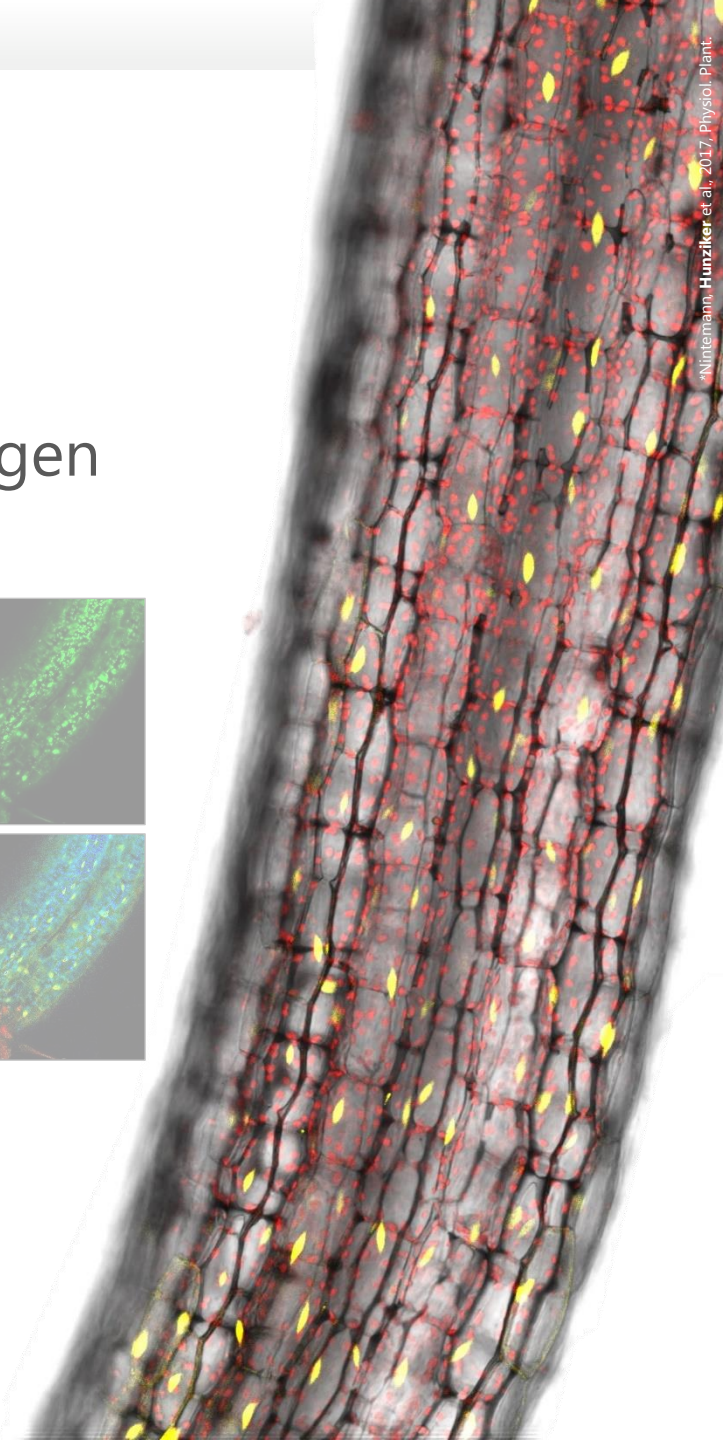
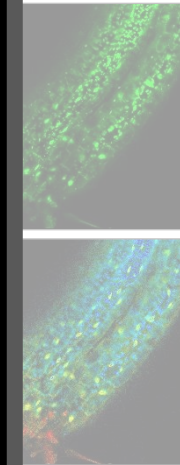


Center for Advanced Bioimaging Denmark

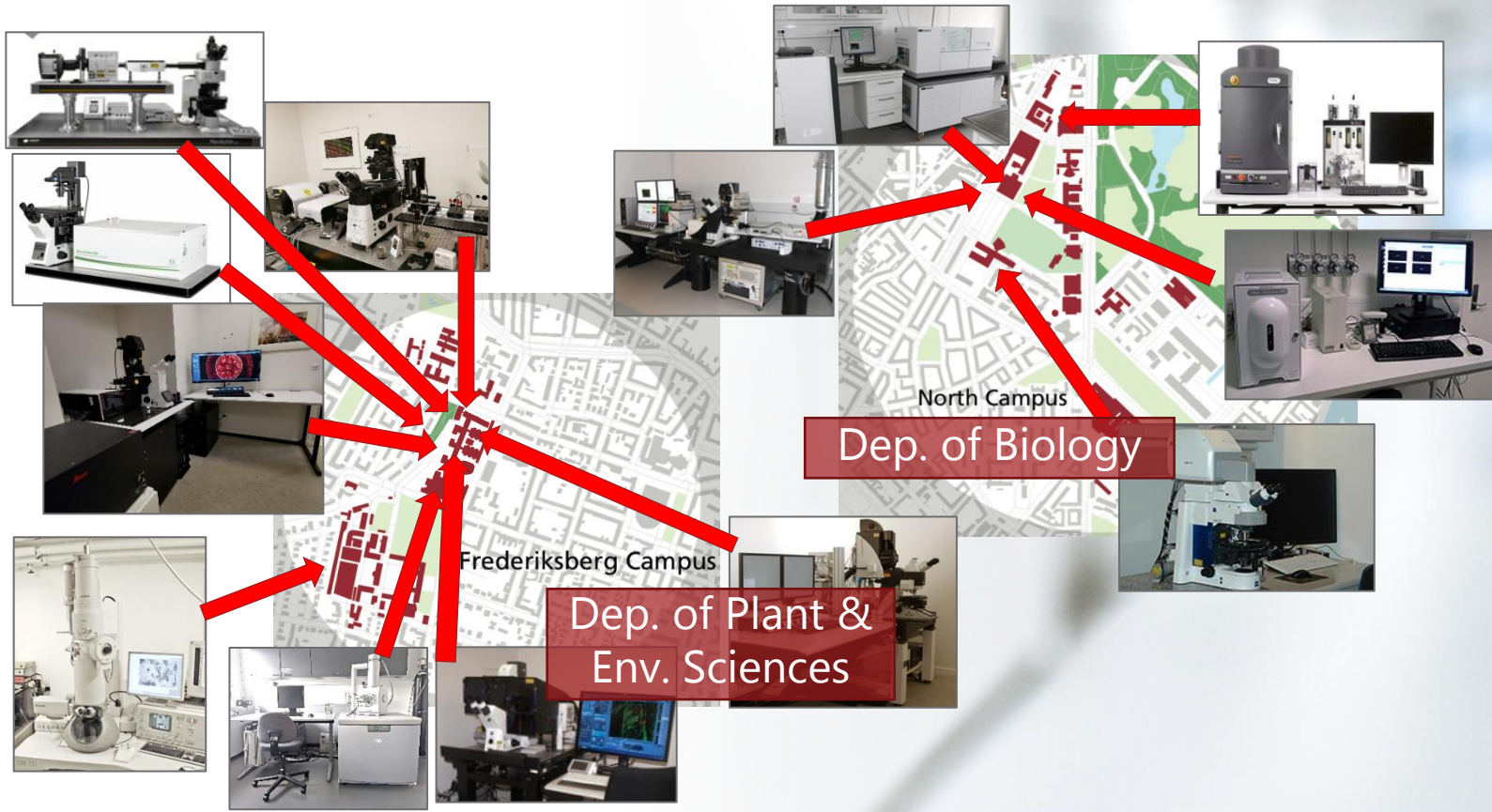
What is CAB?

A bioimaging **core facility** at the SCIENCE faculty, University of Copenhagen

- Light microscopy
- Electron microscopy
- Sample preparation
- Consultation
- Education



A core facility at the Faculty of SCIENCE, KU



Center for Advanced Bioimaging

T168	CAB User Office	Leica SP5-X MP
T167	Image Processing	Leica SP2 MP Andor Spinning I
T165	Wide Field Microscopes	Michael Hansen, I
T164	Slide Scanner	Super-resolution 3 Fluorescence Loca
T163	Micromanipulation	S2 Cell Culture La



CAB staff

Located at PLEN



Sebastian
Kjeldgaard-Nintemann
Center Manager

Located at BIO



Nynne Meyn Christensen
Center Manager

Located at PLEN



Catherine Nielsen
Laboratory Technician



Alexander Schulz
Head of Center

Coordinators

Michael Lisby

Merle Friederike Fenner

Anne-Marie Heegaard

Ivana Novak

Staffan Persson



UNIVERSITY OF COPENHAGEN



Center for Advanced Bioimaging

T168	CAB User Office	Leica SP5-X MP
T167	Image Processing	Leica SP2 MP Andor Spinning I
T165	Wide Field Microscopes	Michael Hansen, I
T164	Slide Scanner	Super-resolution 3 Fluorescence Loca
T163	Micromanipulation	S2 Cell Culture La



Fluorescence,
Confocal,
Super Resolution,
Fluorescence Lifetime,
Electron microscopy

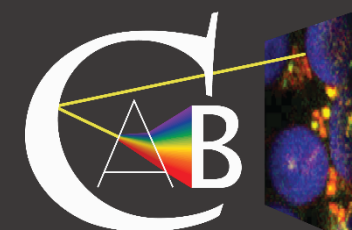
CAB offers

- Extensive instrument park for basic and advanced bioimaging, focus on live imaging
- Training allowing for autonomous use, available for all equipment
- Support by full-time staff available
- Education

918 users accumulated,
ca. 200 currently active

Consulting,
project planning, etc.
Assisted sessions
available.

PhD and student courses,
bi-annual Bioimaging Workshop





Center for Advanced Bioimaging Denmark

cab.ku.dk



danishbioimaging.dk



eurobioimaging.eu

